



XGA80J

MOBILE ELEVATING WORK PLATFORM

Comply with ANSI/CSA



XGA80J

MOBILE ELEVATING WORK PLATFORM

FEATURES

MEASUREMENTS

2.4 m x 0.9 m (8' x 3') working platform
Tri-entry platform with side swing gate
Platform load capacity of 256 kg (564 lb)
160° platform rotation

Power

12V DC auxiliary power
Cold start components
Engine air prefiltration components
Motor state detection and starting protection equipment

Drive

Four-wheel drive
Axle balance system

Safety

Descent and motion alarm
Tilt alarm
Horn
Overload alarm
Platform and turntable emergency stop button
Emergency power unit
Axle balance detection system
Four-wheel control system

Other features

Self-leveling platform
Proportional control
Drive enable
Hour meter
Lockable turntable covers
360° turntable rotation
Full drive motor
Telematics prefabricated connector
Active defending protection system
Hydraulic oil cooler
Anti-hostile environment protection components
Thumb rocker steering

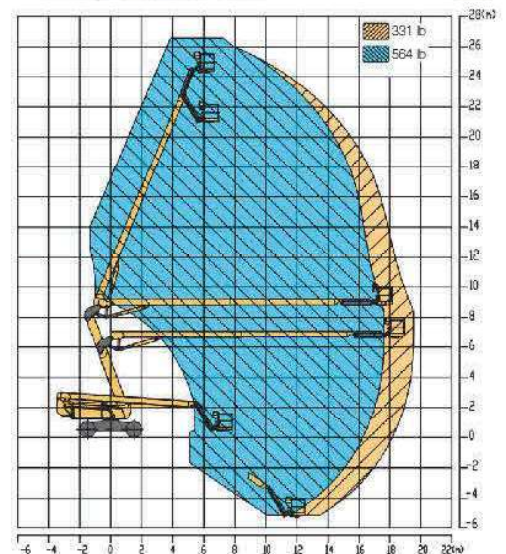
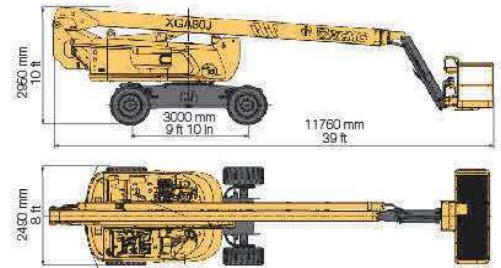
HIGHLIGHT

- The machine has excellent platform range up to 18.9m, enabling multi-directional positioning function and efficient access to the work place.
- It has excellent control performance, customized valve control system, precise control of each action, greatly improve the action smoothness.
- The compact machine (8.54m x 2.3m x 2.4m) is easy for transportation.
- The highest fuel economy in the industry, the first power self-matching energy saving system make the fuel consumption reduced by more than 30% compared with traditional hydraulic system.
- Multi-mode steering control technology can improve driving smoothness and reduce tire wear.
- The motor and reducer integration of the built-in travel reducer, with fast and slow speed mode meet the requirements of the vehicle in different environments.



OPTIONS

- Tool tray
- Working lights package
- Fall arrest kit
- Air pipe to platform
- Anti-squeeze hand auxiliary rail
- Half mesh platform
- Anti-extrusion equipment



MAIN PARAMETER

Item	Metric	Imperial
Overall dimensions(stowed)	11.76 m x 2.49 m x 2.95 m	39 ft x 8 ft x 10 ft
Overall dimensions(transportation)	9.9 m x 2.49 m x 2.95 m	32 ft x 8 ft x 10 ft
Platform size	2.4 m x 0.9 m x 1.15 m	8 ft x 3 ft x 3 ft 9 in
Wheelbase	3 m	9 ft 10 in
Minimum ground clearance	380 mm	15 in
Maximum working height	26.6 m	87 ft
Maximum platform height	24.6 m	81 ft
Maximum working range	19.5 m	64 ft
Lift capacity	150 kg(unrestricted)/256 kg(restricted)	331 lb(unrestricted)/564 lb(restricted)
No.1 Boom luffing range	-1°~ 70°	-1°~ 70°
No.2 Boom luffing range	-35°~ 68°	-35°~ 68°
Jib luffing range	-65°~ 70°	-65°~ 70°
Turntable rotation	360° continuous rotation	360° continuous rotation
Platform rotation	160°	160°
Tailswing	1.33 m	4 ft 4 in
Maximum drive speed	5 km/h	3.1 mph
Minimum turning radius (outside)	4.4 m	14 ft 5 in
Weight	16500 kg	36376 lb
Gradeability	45%	45%
Engine type	Kubota/Deutz	Kubota/Deutz
Engine rated power	47.3 kW/2400 rpm; 55.4 kW/2600 rpm	63.4 hp/2400 rpm; 74.3 hp/2400 rpm
Tires	18-625	18-625